

PRODUCT INFORMATION PACKET

marathon®
Motors

Model No: 184TTDW14078

Catalog No: C152A

2 HP General Purpose Motor, 3 phase, 1200 RPM, 230/460 V, 184TC Frame, ODP
Three Phase ODP Motors



Regal and Marathon are trademarks of Regal Beloit Corporation or one of its affiliated companies.
©2019 Regal Beloit Corporation, All Rights Reserved. MC017097E

REGAL

Nameplate Specifications

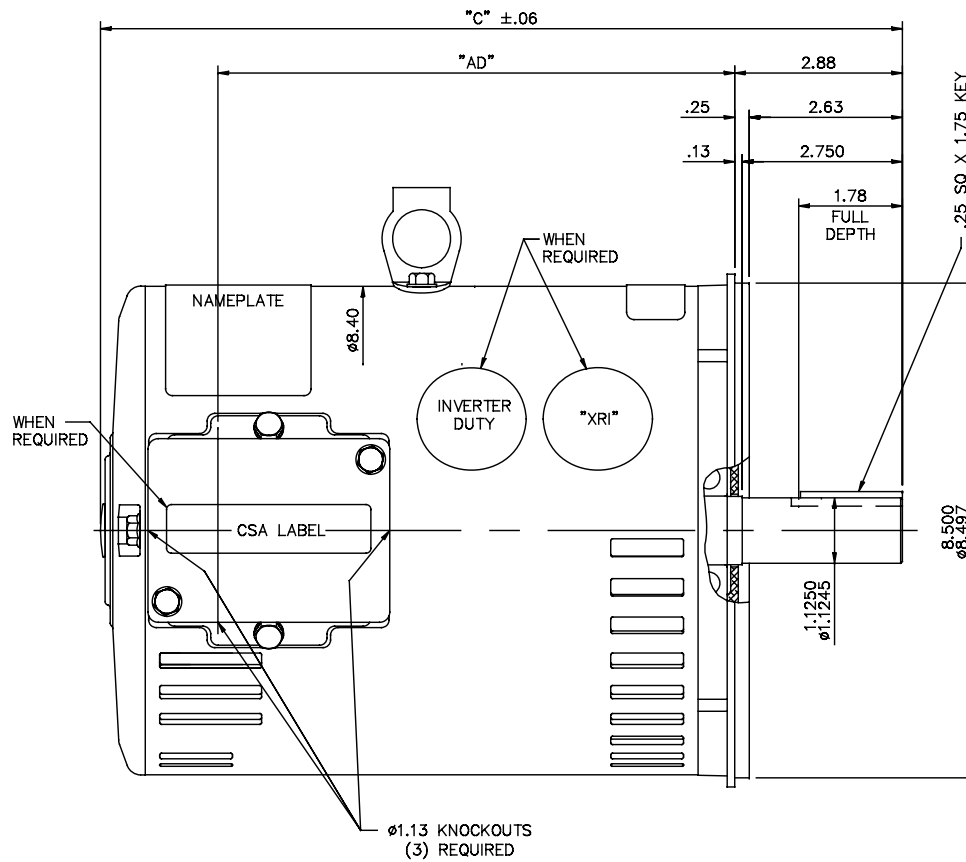
Output HP	2 Hp	Output KW	1.5 kW
Frequency	60 Hz	Voltage	230/460 V
Current	6.8/3.4 A	Speed	1170 rpm
Service Factor	1.15	Phase	3
Efficiency	85.5 %	Power Factor	64.4
Duty	Continuous	Insulation Class	B
Design Code	B	KVA Code	J
Frame	184TC	Enclosure	Drip Proof
Thermal Protection	No	Ambient Temperature	40 °C
Drive End Bearing Size	6206	Opp Drive End Bearing Size	6205
UL	Recognized	CSA	Y
CE	Y	IP Code	22

Technical Specifications

Electrical Type	Squirrel Cage Induction Run	Starting Method	Across The Line
Poles	6	Rotation	Reversible
Resistance Main	6.6 Ohms	Mounting	Round
Motor Orientation	Horizontal	Drive End Bearing	Ball
Opp Drive End Bearing	Ball	Frame Material	Rolled Steel
Shaft Type	T	Overall Length	13.25 in
Frame Length	9.00 in	Shaft Diameter	1.125 in
Shaft Extension	2.75 in	Assembly/Box Mounting	F1/F2 Capable

This is an uncontrolled document once printed or downloaded and is subject to change without notice. Date Created:01/11/2019

035593



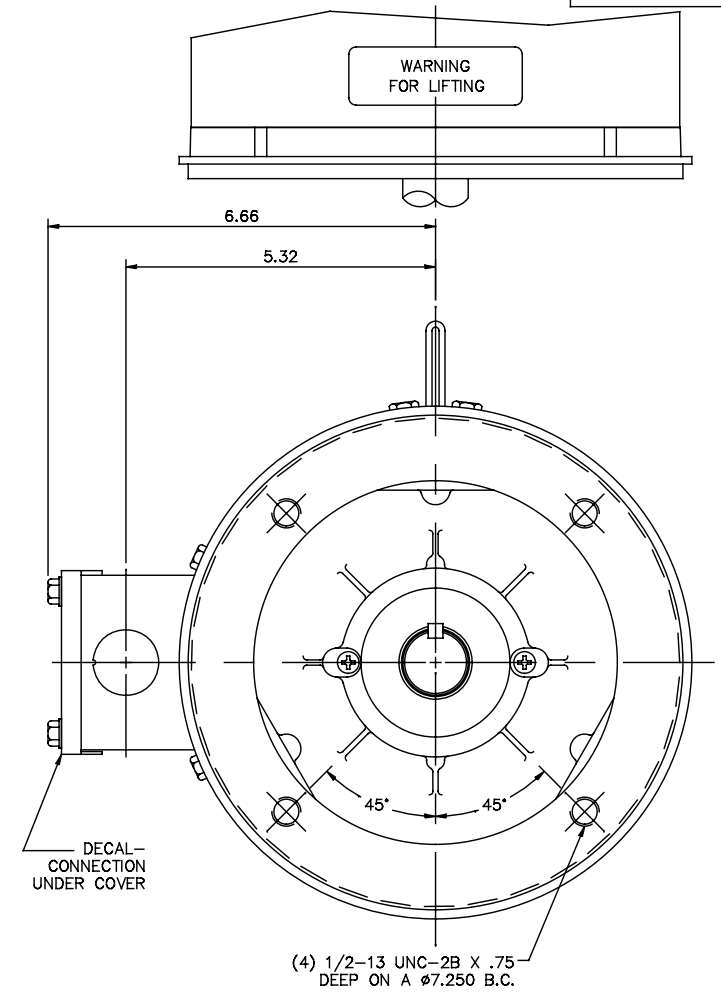
GASKETS THROUGHOUT

MAXIMUM FACE RUNOUT TO BE .004 T.I.R.
MAXIMUM PILOT ECCENTRICITY TO BE .004 T.I.R.
PERMISSIBLE SHAFT RUNOUT TO BE .002 T.I.R.

DASH NO.	"C"	"AD"
850	12.78	7.88
900	13.28	8.38
950	13.78	8.88
1000	14.28	9.38
1050	14.78	9.88
1100	15.28	10.38
1150	15.78	10.88

REVISION		BY & DATE	CHK	ANG	±1/2"
03	CSA LABEL and XRI DECAL ADDED	SAJ 07/03/15	GR	.XX	±.03
02	CONDUIT BOX UPDATED	PVR 04/08/14	JD	.XXX	±.005
01	ADD DECAL 080994-01 PER ISAAC 11-0611	LST 2/10/11	.XXXX	±.0005	
TOLERANCES UNLESS SPECIFIED DEC. INCHES					
.X ±.1					
.XX ±.03					
.XXX ±.005					
.XXXX ±.0005					
.X ±1/2"					
RFP					
DIST NLV					

THIS DRAWING IN DESIGN AND DETAIL IS OUR PROPERTY AND MUST NOT BE USED EXCEPT IN CONNECTION WITH OUR WORK. ALL RIGHTS OF DESIGN AND INVENTION ARE RESERVED. THIS IS AN ELECTRONICALLY GENERATED DOCUMENT - DO NOT SCALE THIS PRINT.



MARATHON ELECTRIC		DRAWN KVN 12/11/2007	
TITLE		SCALE 1=2	
OUTLINE - 180T FRAME		REF 035574 & 35445	
DRIP PROOF - "C" FACE		FMF 184TIDW9308	
MATERIAL		PREV	
FINISH		REV.	
CAD FILE 035593		035593	
SIZE B		03	